




REVIEW ARTICLE

Trends and progress in studying butterfly migration

Shawan Chowdhury^{1,2,3,4}  | Myron P. Zalucki¹ | Tatsuya Amano¹ |
 Tomas J. Poch¹ | Mu-Ming Lin^{1,5} | Atsushi Ohwaki⁶ | Da-Li Lin^{1,7} |
 Li Yang⁸  | Sei-Woong Choi⁹  | Michael D. Jennions¹⁰ | Richard A. Fuller¹

¹School of Biological Sciences, University of Queensland, Saint Lucia, Queensland, Australia

²Institute of Biodiversity, Friedrich Schiller University Jena, Jena, Germany

³Department of Ecosystem Services, Helmholtz Centre for Environmental Research—UFZ, Leipzig, Germany

⁴German Centre for Integrative Biodiversity Research (iDiv) Halle-Jena-Leipzig, Leipzig, Germany

⁵School of Environmental Science and Engineering, Southern University of Science and Technology, Shenzhen, China

⁶College of Liberal Art, J. F. Oberlin University, Tokyo, Japan

⁷Endemic Species Research Institute, Council of Agriculture, Executive Yuan, Nantou, Taiwan

⁸School of Life Science, Sun Yat-sen University, Guangzhou, China

⁹Department of Environmental Education, Mokpo National University, Muan, Jeonnam, South Korea

¹⁰Division of Ecology and Evolution, Research School of Biology, The Australian National University, Canberra, Australian Capital Territory 2600, Australia

Correspondence

Shawan Chowdhury, School of Biological Sciences, University of Queensland, Saint Lucia, Queensland, Australia.
 Email: s.chowdhury@uqconnect.edu.au

Funding information

Deutsche Forschungsgemeinschaft, Grant/Award Numbers: DFG-FZT 118, 202548816

Abstract

Several hundred butterfly species show some form of migratory behaviour. Here we identify how the methodologies available for studying butterfly migration have changed over time, and document geographic and taxonomic foci in the study of butterfly migration. We review publications on butterfly migration published in six languages (English, Simplified Chinese, Traditional Chinese, Japanese, Korean, and Spanish), summarise how migration in butterflies has been studied, explore geographic and taxonomic patterns in the knowledge base, and outline key future research directions. Using English search keywords, we found only 58 studies from Asia; however, after searching in local languages, we found an additional 98 relevant studies. Overall, butterfly migration studies are mostly from North America and Europe. Most studies focus on three species: monarch (*Danaus plexippus*), painted lady (*Vanessa cardui*) and red admiral (*Vanessa atalanta*). About 62% of publications are focused on the monarch, with nearly 50% of migratory butterfly species mentioned in only a single paper. Several research methods have been applied to ascribe migratory status and to study the physiology, neurobiology, and ecology of migration; however, virtually all this research is on a handful of species. There remain hundreds of species for which we do not understand the comprehensive seasonal pattern of movement, flight destinations, wintering, or breeding grounds. A better understanding of movement ecology and migratory connectivity is needed to effectively conserve migratory butterflies. It is essential that research becomes more geographically and linguistically representative since migrants frequently cross political borders and international cooperation is necessary for their conservation.

KEYWORDS

geographic bias, literature trend, methodological advancement, migration ecology, monarch, taxonomic bias

1 | INTRODUCTION

Migration is a widespread phenomenon among animals, often timed to exploit seasonal resource availability, with periodic movement from a habitat that has become unsuitable (Dingle, 2014; Liedvogel

et al., 2011). Migration can reduce the burden of parasitic infections and disease in a population by allowing individuals to escape from contaminated habitats and leave infected individuals behind: migratory butterflies with sublethal infections are less likely to migrate and/or complete the journey (Bartel

This is an open access article under the terms of the Creative Commons Attribution License, which permits use, distribution and reproduction in any medium, provided the original work is properly cited.

© 2022 The Authors. *Integrative Conservation* published by John Wiley & Sons Australia, Ltd on behalf of Xishuangbanna Tropical Botanical Garden (XTBG).

et al., 2011). Migration has attracted a lot of attention from biologists and naturalists, yet much remains mysterious (Dingle, 2014). Many migratory species are declining, mostly due to habitat destruction, over-exploitation of resources, and climate change (Chowdhury, 2023; Smith, 2014; Thogmartin et al., 2017; Wilcove & Wikelski, 2008; Zylstra et al., 2021).

Conserving migratory species is challenging because threats occurring at any location along the migratory route and at any stage of the life cycle can impact the entire population (Chester et al., 2022; Martin et al., 2007; Reynolds et al., 2017). This means that a whole series of intact habitats, perhaps in different jurisdictions, needs to be protected (Wilcove & Wikelski, 2008). Thus, understanding the patterns of spatial connectivity is central to conserving migratory species (Gao et al., 2020; Webster et al., 2002; Wilcove & Wikelski, 2008). While significant progress has been made in characterising and understanding migration in birds (Faaborg et al., 2010; Robinson et al., 2010), less is known about the ecology and conservation of migratory butterflies, except for a few well-known species (e.g., monarch, painted lady; Chowdhury, Fuller, et al., 2021). Migratory butterflies occur disproportionately in tropical rainforests (Chowdhury, Zalucki, et al., 2021), where deforestation is proceeding rapidly (Sodhi et al., 2010). More research is needed to determine if migratory butterflies are at acute conservation risk at any stage of their life cycle. Although Chowdhury, Fuller, et al. (2021) identified 13 lines of evidence (e.g., mass movement, breeding population not established) to ascribe migratory status to butterfly species, only a single line of evidence has been used for 92% of all diagnoses of migration in butterflies, so our knowledge remains superficial in many cases. Here we review the history of studying migration in butterflies, and the primary methodologies to study migration to facilitate the conservation of migratory butterflies.

Insects are the most speciose taxonomic class on earth (Gaston, 1991; Stork, 2018), and provide key ecosystem functions and services, as pollinators, herbivores, predators, and decomposers (Didham et al., 1996; López-Hoffman et al., 2017; Satterfield et al., 2020; Semmens et al., 2011; Yang & Gratton, 2014). They also occur in human-modified ecosystems, often as vectors of human, livestock, or plant diseases, or as herbivores that directly damage crops (Dingle, 2009; McGeoch, 1998; Reynolds et al., 2006; Walther et al., 2002). Every year, many trillions of insects migrate from one part of the world to another, often crossing international borders (Chapman et al., 2011). For example, nearly 3.5 trillion insects traverse the southern United Kingdom every year, transferring more than 3000 tons of biomass (Hu et al., 2016).

Although our current understanding of insect migrations is limited for most taxa, especially for pollinating insects, butterflies are, to some extent, an exception (Brower et al., 2006; Meitner

et al., 2004; Pierce et al., 2014; Satterfield et al., 2020; Chowdhury, Fuller, et al., 2021; Chowdhury, Zalucki, et al., 2021). Yet existing knowledge is limited to a subset of migratory butterflies that have drawn more scientific attention, such as those that are diurnal, brightly coloured, and fly relatively close to the ground, making their migration easier to detect and observe (Dingle, 2014).

Previous reviews of insect migration have also been limited to English-language studies. For a biological phenomenon that occurs across continents and in hundreds or thousands of species, such as insect migration, a more comprehensive literature review across languages and sources is needed. Information on butterfly migration is often published in nonpeer-reviewed journals (i.e., grey literature) (Chowdhury, Fuller, et al., 2021), while up to one-third of scientific documents related to biodiversity conservation are published in languages other than English (Amano, González-Varo, et al., 2016). Ignoring non-English-language and grey literature can severely bias our understanding (Amano & Sutherland, 2013; Amano et al., 2021; Chowdhury, Gonzalez, et al., 2022; Egger et al., 1997; Konno et al., 2020; Møller & Jennions, 2001; Jennions & Møller, 2002a, 2002b). Chowdhury, Fuller, et al. (2021) reported >3% of butterfly species ($N=568$) migrate, but this is probably an underestimate, as only papers in English were reviewed for that study. Chowdhury, Fuller, et al. (2021) also briefly described geographic and taxonomic biases in studies on butterfly migration. However, non-English-language literature is often found for species and in areas where little or even no English-language literature is available (Amano et al., 2021). To better understand geographic and taxonomic biases in studies on butterfly migration, we need to conduct literature searches in non-English languages.

Here we expand the recent global overview on butterfly migration (Chowdhury, Fuller, et al., 2021) by compiling relevant literature from multiple sources including both peer-reviewed and grey literature that are available in English or five other languages. To identify knowledge gaps and provide a pathway to advance our understanding of butterfly migration, we analyse trends in existing studies (geographic, taxonomic and temporal trends), describe the chronological development of studying butterfly migration, and point out where further research might be fruitful.

2 | METHODS

2.1 | Butterfly migration

Butterflies are small-bodied, usually living as adults for only a few weeks to a year (Oberhauser & Solensky, 2004), with the distances they travel during migrations varying greatly among species (Dingle, 2014). While many vertebrates migrate thousands of kilometres and individuals generally

make the return journey, sometimes repeatedly throughout their lives, the situation is more complex for invertebrates (Chapman et al., 2015; Chowdhury, Fuller, et al., 2021; Malcolm & Slager, 2015; Malcolm et al., 1993, 2018; Menz et al., 2019; Stefanescu et al., 2013). Butterfly migration often entails multigenerational movement, with flights by each generation continuing for periods of days to weeks (Dingle, 2014; Holland et al., 2006; Malcolm et al., 1993; Nesbit et al., 2009; Talavera et al., 2018). For example, North American monarch butterflies travel 5000–7000 km per year, but it takes three–five generations to complete the full annual cycle. Each fall, the monarchs fly down to the Trans Volcanic Plateau of Mountains in Mexico from different parts of the United States and Canada and the spring migrants undertake the return journey from Mexico to the United States and Canada (Brower et al., 2006; Dingle et al., 2005; Malcolm, 2018).

It is challenging to define migration in butterflies, and several definitions have been offered (Chowdhury, Braby, et al., 2021). Migration encompasses phenomena at different levels of biological organisation (physiological, individual/behavioural, population/spatial/ecological) but is often characterised as a behaviour that has ecological consequences (Chapman et al., 2015; Dingle & Drake, 2007). Here we have used the definition provided by Kennedy (1985); "*Migratory behaviour is persistent and straightened-out movement effected by the animal's own locomotory exertions or by its active embarkation on a vehicle. It depends on some temporary inhibition of station-keeping responses but promotes their eventual disinhibition and recurrence.*"

2.2 | Literature search

For the literature search, we used (i) Google Scholar (<https://scholar.google.com>) with the keywords: 'Butterfly migration' and 'Migratory butterflies' and checked the first 100 pages, (ii) PubMed (<https://pubmed.ncbi.nlm.nih.gov>) with the same key words, (iii) Web of Science (Web of Science Core Collection; <https://apps.webofknowledge.com>) using the search string TS=(Butterf* AND migr*) with 1900–2020 as the year range, and (iv) Google (<https://www.google.com>) using the same keywords that we used for Google Scholar. When scanning relevant studies, we noticed that many authors published their work in local journals, especially the following four: *Atalanta* (Germany), *Phegea* (Belgium), *Bulletin of the Allyn Museum* (United States), and the *Journal of the Bombay Natural History Society* (India). Therefore, we further checked all the issues of these four journals to make the review more comprehensive. Similarly, Chowdhury, Fuller, et al. (2021) obtained some studies from the South-East Asia and the Neotropical regions, including publications in non-

English languages. We, therefore, conducted searches in five additional languages. Using the equivalent of 'Butterfly migration' and 'Migratory butterflies' we searched in Google Scholar for papers in Simplified ('蝴蝶 迁徙', '蝶 类 迁徙', '迁徙性 蝴蝶' and '迁徙性蝶类') and Traditional ('蝴蝶 遷徙', '蝶類 遷徙', '遷徙性 蝴蝶' and '遷徙性蝶類') Chinese, Japanese ('チョウ' '蝶', '渡り', '移動'), Korean ('이주' and '이주성 나비') and Spanish ('Mariposas migratorias' and 'Migración de mariposas'). Because some of the relevant Japanese literature may not be found using the keywords, '蝶, 渡り' and '移動', we made an additional search using the keywords, '昆虫' and '海上'.

Overall, we obtained 1097 studies; however, 172 of these studies were not relevant (e.g., not on migration, or on moths), which we excluded. We retained 925 studies, published between 1833 and 2020, that mentioned butterfly migration in the abstract, of which 581 are in English, 246 in Spanish, 59 in Japanese, 28 in Simplified Chinese, and 11 in Traditional Chinese. The complete bibliography is provided in the Supporting Information section (Table S1). From each study, we recorded the title and year published, the subject species, geographic location, and the techniques used to establish (or discuss) migratory behaviour, as well as any information provided on parameters such as migratory behaviour, density and distance travelled. To assess geographic and taxonomic patterns, we used the locality and species information and grouped them into six continents (North America, South America, Europe, Africa, Asia and Oceania).

To investigate whether interest in butterfly migration is increasing, we compared the number of papers specifically about butterfly migration to those on any aspect of butterfly biology between 1990 and 2019. Using Web of Science Core Collection (Advanced Search), we searched for papers using two keywords: 'TS=(Butterf* AND migr*)' for migratory butterflies, and 'TS=(Butterf*)' for butterflies. We only considered English-language papers, recognising that our results for this search might largely reflect patterns in North America or Europe where most English-language papers were located.

3 | RESULTS

3.1 | Chronological development of methods of studying butterfly migration

While lepidopterists have been recording insect movements for centuries, interest in butterfly migration only began in earnest at the beginning of the 20th century. The movement of millions of migratory butterflies at low altitude intrigued both professional lepidopterists and amateurs around the world, but it took a few more decades for researchers to start utilising formal scientific

techniques to advance their research (Chowdhury, Fuller, et al., 2021; Satterfield et al., 2020). Here we summarise the development of methods of studying butterfly migration, based largely on the English-language literature, with some inputs from key non-English-language studies, to reveal how research has developed, starting with the first record of a butterfly migrant, the discovery of overwintering sites, then the various methods used to track individuals and ascertain navigation, and finally the recent development of genetic tools and analyses.

While most studies on butterfly migration are on mass movement, increasingly sophisticated methods have become available to study different aspects of butterfly migration (Figure 1). The first major work on butterfly migration was by C. B. Williams, who summarised previous records and observations up to 1930 and listed 217 migratory butterflies from around the world (Williams, 1930), of which 64 were from India and Sri Lanka (Williams, 1927, 1938, 1939a), some from the United States, Guyana, and Mexico (Williams, 1939b), and the rest from Europe, Asia and Australia (Williams et al., 1942; Williams, 1939a, 1957). Torben B. Larsen described 137 migratory butterflies from tropical Africa and Asia in a series of works published between 1975 and 2005 (Larsen et al., 2005; Larsen, 1975, 1977, 1982, 1984, 1986, 1987, 1988a, 1988b, 1992a, 1992b, 1992c, 1995, 2004). Major early works on the migratory butterflies of South America were published by William Beebe, who described migration in 68 species (Beebe, 1949a, 1949b, 1950a, 1950b, 1951). Most of these early studies diagnosed migration based on visual observations of directional movements.

3.1.1 | Tracking migratory butterflies

Tracking the migratory movements of insects is challenging but is becoming more efficient and effective. The direction of migration can be established using simple observations and/or mark-recapture. Levin et al. (1971) used only the angle of arrival at, and departure from, a point to define the flight direction of bees and butterflies. Measuring the vanishing angle is widely used to establish flight directions (i.e., the cardinal direction of the released specimen when it disappears from view) (Srygley, 2001; Srygley et al., 2006). Brussard and Ehrlich (1970) and Baker (1978) used different two-dimensional techniques to track butterfly movements, while Zalucki et al. (1980) used theodolites to identify the direction of flight in three-dimensions, although the work was limited to only 20–25 m. Nowadays, radio-tracking (Knight et al., 2019; Patterson et al., 2008), harmonic radar (Cant et al., 2005; Ovaskainen et al., 2008), and even spatial population dynamics models (Flockhart et al., 2015; Hanski & Thomas, 1994) have been used to track, record, analyse or infer movement

paths. Nearly all these techniques are limited to describing short-range movement behaviours.

We examined the following types of studies on butterfly migration: mark-release-recapture, radar studies, interception traps, natural markers, isotopic analyses, and flight chambers.

Mark-release-recapture

Mark-release-recapture procedures can identify the direction and distance a butterfly has moved but they are labour-intensive, and recapture rates are typically very low. For monarch butterflies, hundreds of thousands of adults have been tagged in the summer breeding range in the last five decades, but only a few hundreds to thousands then recovered from overwintering sites in Mexico (Monarch Watch Organization, University of Kansas, <https://www.monarchwatch.org/>). Even so, this work has established the general direction of migratory flights, the connection between summer and wintering sites, and provided an estimate of population size and migration mortality (Taylor et al., 2020). Fletcher (1936) first described a tagging process for butterflies: *A small patch on the upper surface of the right forewing is rubbed clear of scales and a small label, written in Indian ink on tracing paper, is attached to it with Canada balsam; the adhesive is allowed to harden and the butterfly then released.* This process was very time-consuming and only achievable when sample sizes were small. Urquhart later described an improved procedure to mark migratory butterflies (Urquhart, 1941, 1960; Urquhart & Urquhart, 1978). Urquhart (1941) adopted the method by punching a small hole through the right forewing near the base of the latter and immediately behind the stout radial vein, which is still widely used around the world to track butterfly migration. For example, Kanazawa et al. (2015) described the migration of Chestnut Tiger butterfly (*Parantica sita nipponica*) from Japan to Hong Kong using a mark-release-recapture process.

Radar studies

Migrating insects can fly at high altitudes, up to 2000 or 3000 m above the ground (Chapman & Drake, 2019; Gatehouse, 1997; Mikkola, 2003); however, most migration is below 1500 m (Drake & Reynolds, 2012). Stefanescu et al. (2013) showed that painted lady and other migrant Lepidoptera can take advantage of favourable winds and fly from the ground to altitudes over 1000 m; however, many butterfly migrants travel close to the ground where their airspeeds are higher than the wind speed, allowing them to make progress in a seasonally appropriate direction even when there is a headwind (Srygley & Dudley, 2007).

Identification of insects flying at high altitudes based on radar echoes started in 1949 (Crawford, 1949), and the detection of a massive locust swarm followed in 1954 (Rainey, 1955); nevertheless, it took more than a decade to deploy radar specifically to observe locusts. At the end of the 1960s, radar was deployed

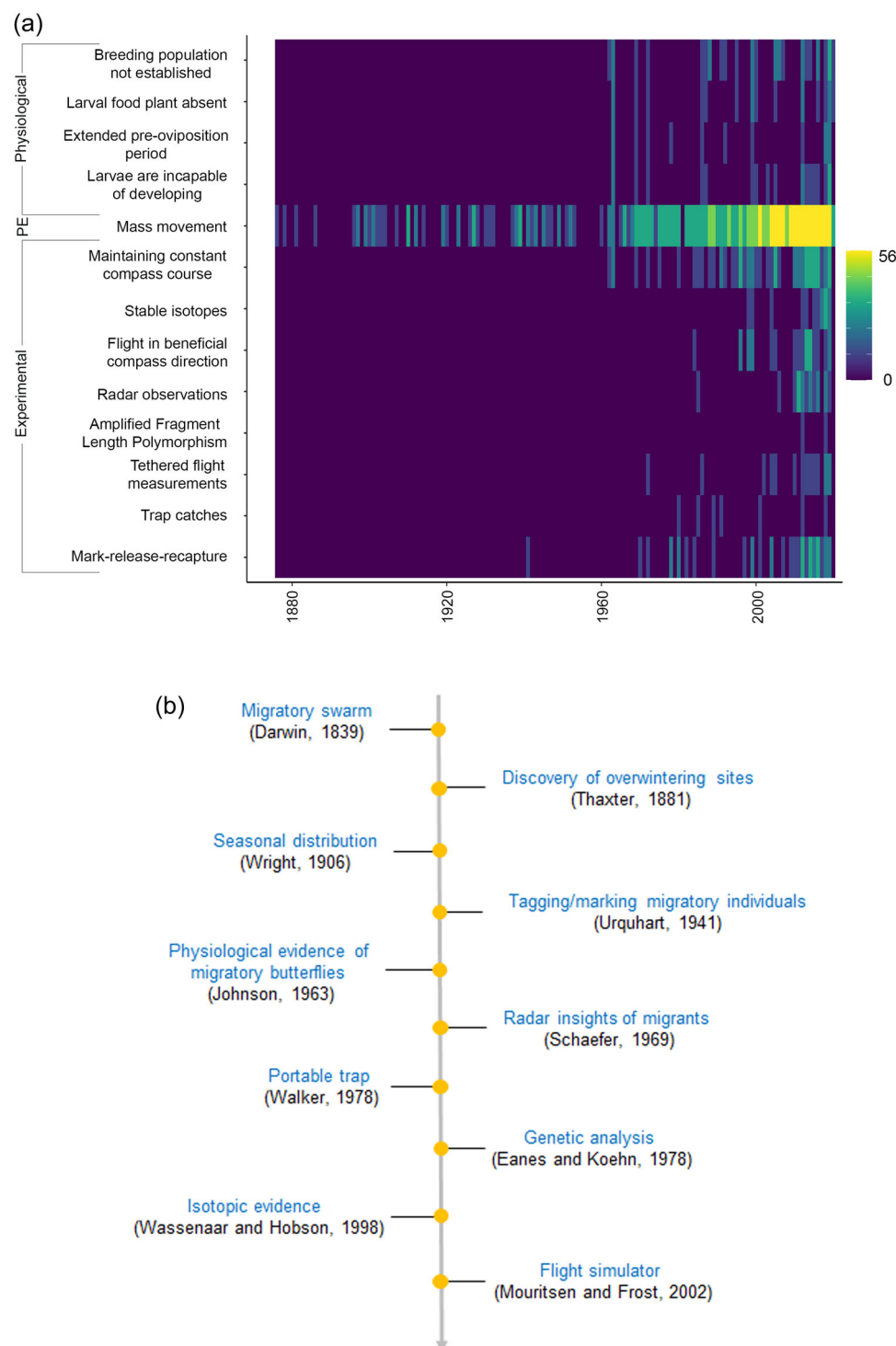


FIGURE 1 (a) Chronological progression of different methodological approaches to studying butterfly migration (PE = population evidence), where the colour bar is representing the number of studies. (b) Chronological development of key methods to diagnose migration in butterflies, where methodological advances are shown in 'blue', and an example reference is given for each.

to observe insect movements in Africa and over the next few decades there was a surge of radar-derived information, mainly on night-flying insects including locusts and moths (Chapman & Drake, 2019; Haskell, 1970; Richter et al., 1973; Schaefer, 1969; Vaughn, 1985). It still took several years to establish migration histories for individual butterfly species (Chapman & Drake, 2019; Stefanescu et al., 2013). With the help of radar and citizen-science data, we now know that high-altitude migration is common for

painted lady butterflies in the United Kingdom (Chapman et al., 2010). About seven million painted lady butterflies migrated from southern Europe to the United Kingdom during spring 2009, and 14 million returned southward during fall, when they completed a 15,000-km annual migration requiring six generations (Chapman et al., 2010; Satterfield et al., 2020; Stefanescu et al., 2013). Yet, most radar investigations of insect migration have been directed at species other than butterflies.

Interception traps

During the mid-1970s, Walker successfully established malaise traps as linear barriers in the Florida Peninsula (United States) to observe the movement of migratory butterflies. He described the northward and southward movements of 10 butterfly species and showed that malaise traps can continuously and effectively monitor insect migration within the boundary layer (Walker, 1978). The original traps were made of polyester which could not withstand strong winds and required frequent repair and replacement; a hardwearing-cloth trap overcame these problems. Traps could capture roughly 70% of passing migratory individuals (Walker, 1985a). In the following years, Walker further developed the traps and elucidated the full seasonal flight patterns of these migratory butterflies (Walker, 1985b, 1991, 2001; Walker & Lenczewski, 1989).

Natural markers

Natural markers can be used to ascertain the natal origins of aggregated and moving migrants. For example, Malcolm et al. (1989) used cardenolide fingerprints. Monarch butterfly larvae ingest cardenolides from their hostplant—milkweeds, which is a toxic group of chemicals. Many species of North American milkweeds possess different proportions of these toxins, which remain intact in adult individuals (Freedman, Choquette, et al., 2021; Tan et al., 2019). By extracting these from adult butterflies and visualising them on a thin layer chromatography plate, they determined the 'cardiac glycoside fingerprint'. Adults from different regions ingested different milkweed species, and had unique cardiac glycoside fingerprints. About 90% of monarchs in Mexico had developed on *Asclepias syriaca*—once the most abundant milkweed host in the midwestern US (Malcolm et al., 1989). One limitation of this approach is that some hostplant species contain a similar range of cardiac glycosides and some have none (Brower, 1995; Freedman, Choquette, et al., 2021; Malcolm et al., 1989; Tan et al., 2019).

When insects visit flowers, pollen may become attached to their bodies and it too can be used to track long-distance insect migrations (Hendrix et al., 1987; Mikkola, 1971). Suchan et al. (2019) collected 47 butterfly samples and meta-barcoded the transferred pollen to understand the migration of the painted lady. There was pollen from 157 species of plants from 23 orders, most of which are insect pollinated. Most of these plant species were of African-Arabian origin (73%) and 19% were endemic to that region, strongly suggesting that the butterflies migrate northward into southern Europe from Africa in the spring (Suchan et al., 2019).

Isotopic analyses

The stable isotopes of organic tissues are related to the site where an individual develops, which can

be used to infer the most likely natal origin of migratory butterflies (Flockhart et al., 2015; Hobson et al., 2021; Reich et al., 2021; Stefanescu et al., 2016; Talavera et al., 2018; Wassenaar & Hobson, 1998). For example, Wassenaar and Hobson (1998) confirmed the geographic natal origins and established wintering roost sites of monarchs from different regions by sampling and measuring the isotopic elemental composition (stable hydrogen (dD) and carbon (d13C) isotope ratios) of wintering monarchs in Mexico. They compared 597 overwintering monarchs from 13 roosting sites and measured background isotope ratios in the natal sites across their breeding range over a single migration cycle. This revealed that all the monarchs originated from the Midwest United States, although two colonies showed a more northerly origin (Wassenaar & Hobson, 1998). Flockhart et al. (2013, 2015) subsequently used the technique to study the population dynamics and movement of monarchs in greater detail. Recently, Talavera et al. (2018) discovered the migration of *Vanessa cardui*, from Africa to Europe, by analysing isotope values (d2H); Reich et al. (2021) showed how Strontium isotopes ($^{87}\text{Sr}/^{86}\text{Sr}$) can be used to study migration and dispersal.

Flight chambers

Early designs of tethered flight systems started in the 1950s, but it took many years for the procedures to be refined sufficiently for accurate interpretation (Kennedy & Booth, 1963, 1964; Kennedy & Ludlow, 1974; Kennedy, 1985; Krogh & Weis-Fogh, 1952). Flight chambers eventually revealed several important features of migratory behaviour (Kennedy, 1958, 1985), paving the way for detailed studies on the duration and orientation of migration flights (Mouritsen & Frost, 2002; Mouritsen et al., 2013; Reppert et al., 2004). Tethered flight provides an indication of the flight propensity of the migrants making it possible to study the migratory motivation of insects in the laboratory (Minter et al., 2018; Mouritsen, 2018) in relation to the environmental conditions experienced during development. Flight simulators were a key innovation as they have allowed for experiments investigating preferred headings and response to navigational markers and cues.

3.1.2 | Physiological evidence of migratory individuals

Cecil G. Johnson studied differences in life history traits between migratory and non-migratory butterflies, showing that (i) migratory females start their flight before ovarian development, (ii) migrants are sexually immature in some cases, (iii) migratory individuals usually gain weight as they fuel up for the long journey, and (iv) they have longer forewings than non-migrant individuals (Johnson, 1963, 1966, 1969;

Stefanescu et al., 2021; Wiklund & Friberg, 2022). This work suggested that distinctive physiological and neurophysiological factors are associated with migration, and that ovarian development can be initiated, prolonged, or suppressed depending on the environmental conditions. Recently, Stefanescu et al. (2021) showed that the painted lady fulfils the oogenesis–flight syndrome, whereby the prereproductive period is shorter during the migration period, the mating frequency is highly correlated with the host plant abundance, and mated females can locate potential breeding areas. Additionally, Dudley and Srygley (1994) showed that the airspeeds of butterflies can be predicted from morphological measurements under natural conditions.

3.1.3 | Genetic analysis

Genetic techniques to study migration appeared in the mid-1970s, when Eanes and Koehn (1978) collected monarchs from the United States and Canada and used electrophoretic alleles at six enzyme-loci as genetic markers, and Wright's *F*-statistics to analyse the genetic structure of the population. They found significant allele frequency differences between migratory and nonmigratory individuals (Eanes & Koehn, 1978). In subsequent decades there was rapid improvement in the use of genetic tools to uncover patterns of migratory connectivity (Dingle, 2014; Freedman, de Roode, et al., 2021; Sauman et al., 2005; Xiafang, 2017; Zhan et al., 2014; Zhu et al., 2008). Information about expressed sequence tag resources (Zhu et al., 2008) and the monarch genome (Zhan et al., 2011) has opened up the study of the genetic basis and evolutionary history of migration in monarchs, using a variety of genetic markers including microsatellites (Lyons et al., 2012; Pierce et al., 2014, 2015), and genome-wide nucleotide polymorphism (Zhan et al., 2014). Using amplified fragment length polymorphism (AFLP), Brattström, Åkesson, et al. (2010) attempted to determine the specific migratory routes of red admiral (*Vanessa atalanta*) in Europe. While there were significant differences between study sites, there was no clear pattern in orientation (Brattström et al., 2008; Brattström, Åkesson, et al., 2010; Brattström, Bensch, et al., 2010). In 2011, MonarchBase (<http://monarchbase.umassmed.edu>) was released to make the genome widely available (Zhan et al., 2011). Sequencing 101 *Danaus* genomes around the world, Zhan et al. (2014) concluded that both *D. plexippus* and southern monarch (*D. erippus*) have a common migratory ancestor. In another study, by analysing whole genome sequences, García-Berro et al. (2022) showed that migratory butterflies have significant higher levels of genome-wide heterozygosity than the nonmigrants.

3.1.4 | Navigation

Migratory butterflies appear to use either a compass alone, or a map and compass (Dingle, 2014). Several species of birds (Chernetsov et al., 2008; Perdeck, 1958; Thorup et al., 2007), the eastern newt (*Notophthalmus viridescens*) (Phillips et al., 1995), the loggerhead sea turtle (*Caretta caretta*) (Putman et al., 2011), and the spiny lobster (*Panulirus argus*) (Boles & Lohmann, 2003) show true navigation; migrating individuals know where they are heading and can compare their current geographic location to the destination (Gould & Gould, 2012; Mouritsen & Frost, 2002). Other migrants seem to use a vector navigation strategy (Mouritsen et al., 2013), where they do not possess a map sense but orient in an inherited direction using just a compass system and a clock or calendar (Gwinner & Wiltschko, 1978; Munro et al., 1993). A map sense indicates the relative position of the destination from a current location, whereas a compass sense enables migrants to travel in a particular direction (Guerra & Reppert, 2015).

It has been suggested that monarchs use both vector navigation (Calvert, 2001) and true navigation (Rogg et al., 1999) to find their overwintering sites. However, whether migrant monarchs possess a true map sense is debated (Mouritsen et al., 2013; Oberhauser et al., 2013). Using over five decades of field data, Mouritsen et al. (2013) suggested that monarch butterflies use a vector-navigation strategy (but see Oberhauser et al., 2013). Among diurnal migrants (e.g., butterflies), a sun compass involving skylight cues plays a key role in orientation. Here, individuals use cues such as the sun's azimuthal position and possibly daylight polarisation patterns to orient, as seen in the painted lady (Merlin et al., 2012; Nesbit et al., 2009; Reppert et al., 2010; Stalleicken et al., 2005). Migrating monarchs use circadian clocks to adjust their directional flight throughout the day (Guilford & Taylor, 2014; Reppert et al., 2010; but see Freedman et al., 2017; Ning et al., 2018). Some migrants use a magnetic compass (inclination angle, polarity, and intensity) to orient (Dreyer et al., 2018; Lohmann, Putman, et al., 2012; Lohmann, 2012); although there is a debate whether southward-migrating monarchs use a magnetic compass (Guerra & Reppert, 2015; Reppert et al., 2010).

3.2 | Trends in migration literature

Even though the importance of studying butterfly migration was recognised very early (Brower, 1995), most research has restricted to a few species and specific regions around the world (Chowdhury, Fuller, et al., 2021).

3.2.1 | Regional pattern

We obtained marked variation in the number of studies per continent; most English-language

studies on butterfly migration (total English-language studies = 581) were from temperate or cooler regions, or from the Northern Hemisphere (especially the United States), with far fewer from the sub/tropics, or the Southern Hemisphere (Figure 2). Most North American studies were from the United States and most European studies were from the UK. However, by searching in four Asian languages and Spanish, we found another 344 relevant studies, mostly on species in North America (162 Spanish-language studies), but also in South America (44 in Spanish) and Europe (37 in Spanish), and Asia (98 studies in total: 59 in Japanese, 28 in Simplified Chinese, 11 in Traditional Chinese, and 1 in Spanish, Figure 2). This highlights the importance of including non-English studies in literature reviews. Overall, most studies on butterfly migration were from North America (548 studies, >50%), and only 4% (45 studies) were from Africa.

3.2.2 | Taxonomic pattern

The available studies are clearly biased towards a few species; the monarch (62% of the 926 studies), painted lady (9.6%), and red admiral (5.8%) (Figure 3). There were only six species (monarch, painted lady, red admiral, common emigrant (*Catopsilia pomona*), lesser wanderer (*Danaus chrysippus*) and common crow (*Euploea core*) with more than 30 studies, and 41 species with >10 papers (all on either pierids or nymphalids except for pea blue (*Lampides boeticus*, Lycaenidae), and long-tailed skipper (*Urbanus proteus*, Hesperiiidae). Nearly 50% (271 species) of our recorded migratory

butterfly species have not been the subject of a thorough single study but are just mentioned once in a paper. On the other hand, the monarch accounted for 62% of the studies (Figure 3). Being a range-expanding species that has spread well beyond its native range, the monarch butterfly figures prominently wherever it is present.

Studies on the monarch dominate not only in North America (nearly 85% of all studies; Figure 2), but even in areas where monarchs do not migrate (e.g., Spain). Elsewhere in the world, studies were biased towards other species. For example, painted lady and red admiral dominated Europe, lesser wanderer and monarch dominated Africa and Australia, and chestnut tiger (*Parantica sita*), and common crow (*Euploea core*) in Asia (see Supporting Information Section: Table S1 for more details).

3.2.3 | Publication trends

The number of English-language peer-reviewed papers on butterfly migration did not change over time (butterfly biology in general and those specifically on butterfly migration; $\chi^2 = 0.14$; $df = 1$; $p = 0.7061$; Generalised Linear Model with a Poisson distribution; Figure 4a).

The proportion of papers on migratory butterflies, compared to all papers on butterflies, ranged from 1% to 3%. While the number of papers on monarchs has increased significantly over the past 30 years ($\chi^2 = 37.223$; $df = 1$; $p < 0.0001$; Generalised Linear Model with a Poisson distribution; Figure 4b), the number of papers on nonmonarch butterfly species has not noticeably risen. In the last few decades, the North American migratory monarch

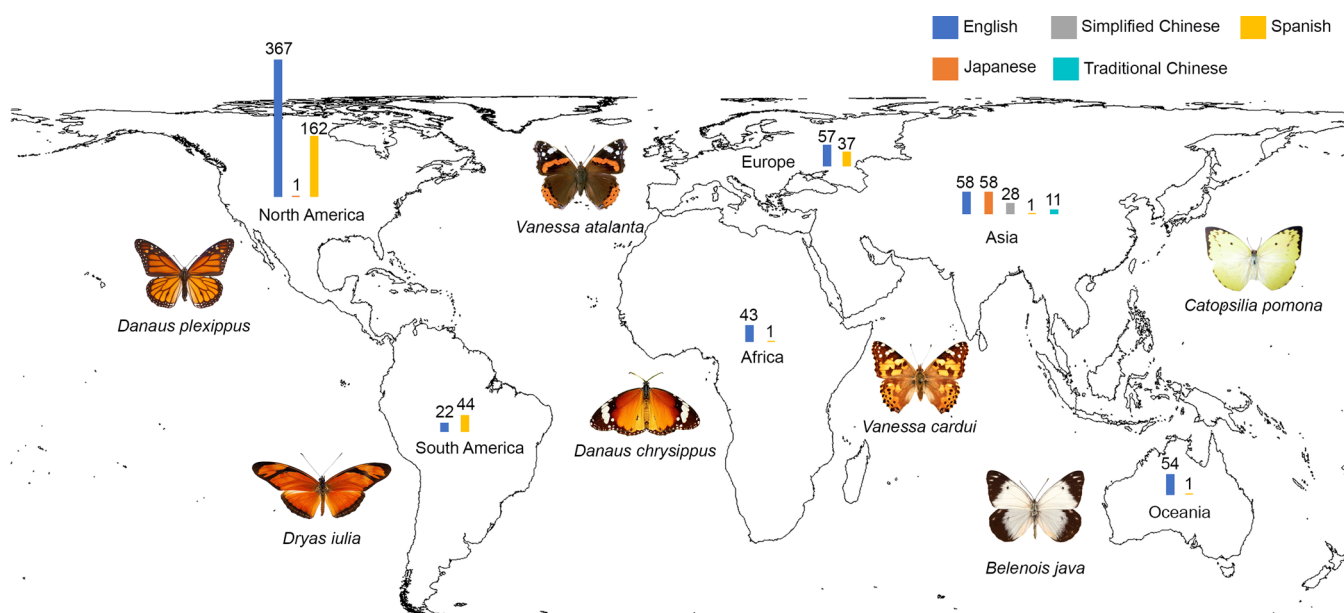


FIGURE 2 The number of butterfly migration studies by language from each continent with some of the most popular regional migratory butterflies (*Danaus plexippus* for North America, *Dryas iulia* for South America, *Vanessa atalanta* for Europe, *Danaus chrysippus* for Africa, *Vanessa cardui* for Europe and Africa, *Belenois java* for Australia, and *Catopsilia Pomona* for Southeast Asia; CC-BY license, see the Supporting Information: Table S2 for photographer details).

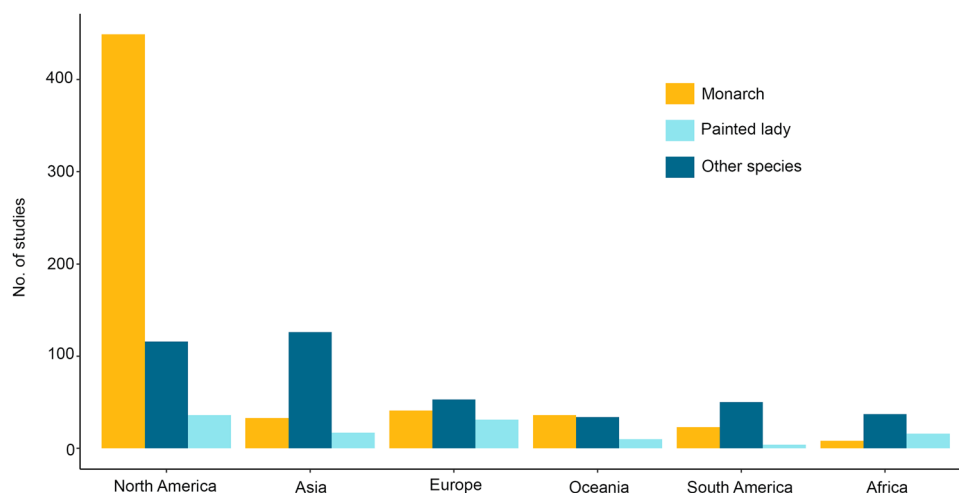


FIGURE 3 The number of butterfly migration studies in each continent for three different butterfly groups (monarch (1 species: orange), painted lady (1 species: skyblue) and all the other butterfly migrants (566 species: dark blue)).

population size has declined by >80%, starting in the 1990s (Semmens et al., 2016; Stenoien et al., 2018; Zylstra et al., 2021); this decline of an iconic species has probably prompted more research.

4 | DISCUSSION AND FUTURE DIRECTIONS

We show that most butterfly migration studies are restricted to certain regions, and that only a few species have been studied in detail (monarch, painted lady and red admiral). There was no increase in the number of publications on butterfly migration over the years, although research on the Monarch has accelerated.

We also showed the potential importance of non-English-language studies to better understand butterfly migration globally. Of course, there are thousands of languages globally, and here, we considered only five non-English languages. Future studies could consider a broader set of languages widely used for scientific studies (e.g., French, German, Italian, Polish, Portuguese, Russian, and other non-European languages). Language restrictions might have impacted our findings. For example, if our search was expanded into German, French, and Portuguese, we might have located more studies from Europe, Africa, and South America (Chowdhury, Gonzalez, et al. 2022). However, given we checked two regional journals (*Atalanta* and *Phegea*; regularly publishing studies in German and Dutch), we think that we have already captured many German and Dutch studies. Similarly, although we used rigorous literature search approaches to make the review as comprehensive as possible, it is inevitable that we missed relevant papers with our keyword driven search. There is, however, no reason to believe that this would introduce a systematic bias that would affect our overall conclusion.

Charismatic species, especially if also threatened, often attract a disproportionate amount of research, and research using the latest techniques is often concentrated in advanced-economy countries. This sort of ‘research bias’ is quite common in biology (Di Marco et al., 2017), but can hamper our understanding of species ecology and conservation (Holman et al., 2015; Jennions et al., 2013; Nuñez et al., 2021; Pyšek et al., 2008). We have identified both taxonomic and geographic biases in published studies on butterfly migration in that most studies: (i) cover North America and Europe, with very few from the tropics or subtropics, and (ii) focus on a handful of species. To reduce bias, researchers could conduct more studies on migration in poorly studied species and regions to identify the true prevalence of migration in butterflies. For example, a recent study has shown that unlike migratory birds, seasonal movements between suitable and unsuitable habitats in migratory butterflies appears most prominent in the tropics (Chowdhury, Zalucki, et al., 2021). Here, we identify a lack of studies in the tropics, suggesting that there is an underrepresentation of tropical butterflies in the migration literature.

A recent review listed several 100 butterfly migrants and the rate of discovery of new migratory species reveals there might be thousands more (Chowdhury, Fuller, et al., 2021). Nevertheless, it is worth noting that there can be both migratory and non-migratory populations and individuals within a species (Slager & Malcolm, 2015; Zanden et al., 2018; Zhan et al., 2014). To understand seasonal movements, it is essential to monitor across a species’ full geographic distribution, a task for which active citizen science participation can be highly beneficial (Chowdhury, Aich, et al., 2022; Jarić et al., 2020; Juhász et al., 2020; Mason et al., 2018; Soroye et al., 2018; Chowdhury, Braby, et al. 2021, Chowdhury, Alam, et al. 2021). For example, both amateur and professional

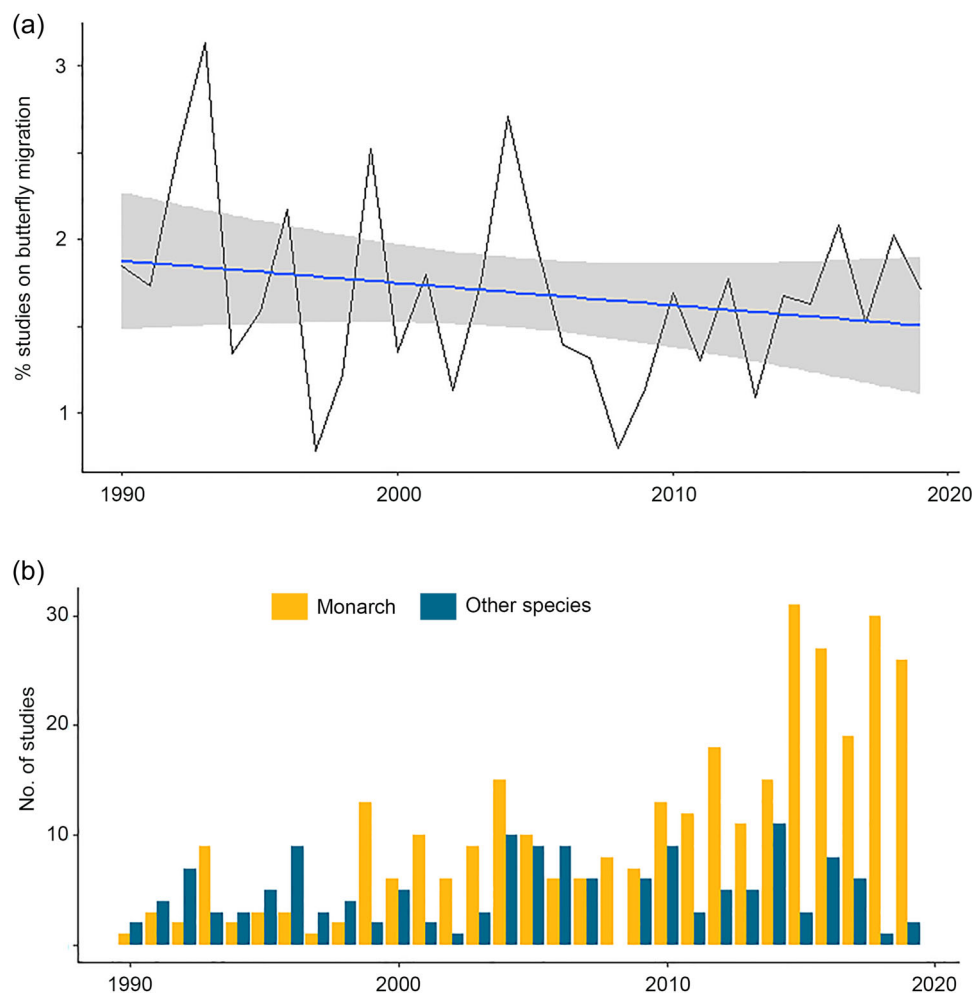


FIGURE 4 Temporal trends in peer-reviewed English-language papers on butterfly migration. (a) Yearly percentages of papers on butterfly migration to all butterfly papers. (b) The number of papers on monarchs and other migratory butterflies.

ornithologists widely use eBird, which has transformed the availability of bird data globally (Amano, Lamming, et al., 2016; Bonney et al., 2009; Sullivan et al., 2009). So how can we engage citizen science in the tropics? Nowadays, iNaturalist, a citizen science project, is increasingly popular both among professional and amateur naturalists (Callaghan et al., 2020; Chowdhury, Aich, et al., 2022; Schuttler et al., 2018). Citizen science tools, such as this, can widen the coverage of space and species in data collection; and collating and analysing the resulting data will help to identify which species are, in fact, migratory. For this reason, maximising funding and shifting research effort towards tropical regions could enable broader discovery of migration in butterflies. In many countries, funding is more readily available for insects of economic significance, such as pests and pollinators. Future studies could examine the disparity in funding for species at elevated extinction risk.

Future research could focus on identifying, tracking, and understanding the migratory trajectories and behaviours of butterfly migrants. Time-honoured techniques such as mark-release-recapture can be used to calculate travel distances, and whether the distance and overall direction of movement is

associated with changes in seasonal resources. Isotopic analysis can be used to identify the origin of individuals (Wassenaar & Hobson, 1998; Zanden et al., 2018); flight chamber experiments can be used to record flight duration of butterflies and differentiate migrants and nonmigrants and even differences in orientation (Minter et al., 2018; Mouritsen & Frost, 2002; Reppert & de Roode, 2018; Reppert et al., 2004). Radars can be used in hotspot regions to determine the seasonal flow of movements (Chapman et al., 2010, 2015; Hu et al., 2016; Stefanescu et al., 2021); female butterflies can be collected and dissected to check the status of their ovarian development (Johnson, 1963). Genomic resources such as EST-based microarray analyses, transcriptome libraries and single-nucleotide polymorphism (SNP) marker sets can be used to determine migration routes (Brattström, Åkesson, et al., 2010; Brattström, Bensch, et al., 2010; Liedvogel et al., 2011); and ecological niche and movement modelling tools can uncover spatial patterns of seasonal occurrence and habitat use in migratory butterflies (Grant et al., 2018; Menchetti et al., 2019; Zalucki et al., 2016; Chowdhury, Braby, et al., 2021; Chowdhury, Zalucki, et al., 2021). Further, application of interdisciplinary tool in movement ecology can

advance our understanding of butterfly migrants (Jia et al., 2022). In hoverflies, Jia et al. (2022) described the migration of *Episyrphus balteatus* using long-term trapping records, trajectory analysis and intrinsic markers.

During migratory flights, monarch butterflies adjust their flight altitude and vectors by flapping and gliding (Gibo, 1981; Gibo & Pallett, 1979), but we do not know if this occurs in other migratory butterflies. Several studies have shown that some long-distance migratory butterflies use air currents (Chapman et al., 2010; Hu et al., 2016, 2021; Srygley & Dudley, 2007; Srygley, 2001; Stefanescu et al., 2007) but little is known about the cost of migration, metabolism of flight fuels, or how migratory butterflies counter overheating. Moreover, there are some phenotypic differences, especially in traits linked to migration, between eastern and western monarchs, despite genetic studies indicating these populations are closely related (Freedman, de Roode, et al., 2021). Future studies could assess the reasons for these differences between eastern and western monarchs. Similarly, migratory butterflies can be tracked using natural markers such as cardenolides (Brower, 1995; Malcolm et al., 1989). It would be interesting to extend this method to other Danainae butterflies that feed on Apocynaceae.

While undertaking migratory flights, migrants often cross multiple regions, which makes them vulnerable to anthropogenic threats and complicates their conservation (Juhász et al., 2020; Malcolm, 2018; Martin et al., 2007; Reynolds et al., 2017; Runge et al., 2014), Chowdhury, Zalucki, et al. (2021), Chowdhury, Braby, et al. (2021). Due to extensive anthropogenic pressure and human-induced climate change, insects, including butterflies, are declining worldwide (Chowdhury, 2023; Chowdhury, Jennions, et al., 2022; Fox, 2013; Habel et al., 2019; Hallmann et al., 2017; Wagner, 2020; Wagner et al., 2021; WallisDeVries et al., 2011; but see Sparks et al., 2005, 2007). It is notable that more than half of migratory birds across all major flyways have declined in the last 30 years, suggesting that, in general, migratory species are at greater risk than sedentary species (Kirby et al., 2008). The few available time series analyses have shown some migratory butterfly populations to be stable, while others are declining. For example, while the North American migratory monarch population has dramatically declined in the last few decades (Stenoien et al., 2016; Zylstra et al., 2021), populations of painted lady, red admiral and clouded yellow (*Colias croceus*) have remained relatively stable (Fox et al., 2015; Hu et al., 2021). However, it should be noted that time-series data are rare for most migratory butterflies, and unavailable from most parts of the world.

According to Goal-2 of the post-2020 biodiversity framework, area-based conservation measures and ecosystem-based approaches ('nature-based

solutions') are crucial to halt ongoing biodiversity decline (Convention on Biological Diversity, 2020). Protected areas and other conserved areas have, and will continue to be, a significant global tool to conserve threatened and endemic biodiversity (Chowdhury, Jennions, et al., 2022; Watson et al., 2014). Only 17% of migratory butterfly species are adequately protected by protected areas globally (Chowdhury, Cardillo et al., 2022). Future studies could identify new protected areas using spatial prioritisation approaches to adequately protect the habitats of migratory butterflies and to meet the post-2020 global biodiversity framework targets (Chowdhury, Jennions, et al., 2022). Future studies could also investigate whether protected areas better help migratory butterfly populations to persist over time. Here, incorporating butterflies in the monitoring plan of protected areas, creating baseline databases, and using them for future assessments will help us to assess the effectiveness of protected areas.

To implement effective migratory species conservation, holistic analyses across the entire distribution are needed, since migrants require a chain of intact habitat (Flockhart et al., 2015; Gao et al., 2020; Runge et al., 2014). Ultimately, knowledge of seasonal movements, locations of stopover sites, protected area coverage, and improved knowledge of the basic biology of migration in butterflies is needed to drive successful conservation planning (Chowdhury, Jennions, et al., 2022). Migratory butterflies perform a broad range of functions in ecosystems including transferring biomass, transporting nutrients, and influencing resource fluxes and food web structure (Bowlin et al., 2010; Dingle, 2014; López-Hoffman et al., 2017; Satterfield et al., 2020). If we are to conserve them effectively, migratory butterflies need far more attention than they currently receive.

AUTHOR CONTRIBUTIONS

Shawan Chowdhury: Conceptualization; data curation; formal analysis; funding acquisition; investigation; methodology; project administration; resources; software; validation; visualization; writing – original draft; writing – review editing. **Myron P. Zalucki:** Funding acquisition; methodology; project administration; resources; supervision; validation; visualization; writing – original draft; writing – review editing. **Tatsuya Amano:** Formal analysis; methodology; validation; visualization; writing – original draft; writing – review editing. **Tomas J. Poch:** Data curation; visualization; writing – review editing. **Mu-Ming Lin:** Data curation; visualization; writing – review editing. **Atsushi Ohwaki:** Data curation; visualization; writing – review editing. **Da-Li Lin:** Data curation; visualization; writing – review editing. **Li Yang:** Data curation; visualization; writing – review editing. **Sei-Woong Choi:** Data curation; visualization; writing – review editing. **Michael D. Jennions:** methodology; resources; validation; visualization; writing – original draft; writing – review editing. **Richard A. Fuller:** Funding

acquisition; methodology; project administration; supervision; validation; visualization; writing – original draft; writing – review editing.

ACKNOWLEDGEMENTS

The corresponding author is thankful to the Australian Government, the University of Queensland, and the Centre for Biodiversity and Conservation Science for providing an International Research Training Program Fellowship. SC gratefully acknowledge the support of the German Centre for Integrative Biodiversity Research (iDiv) and the sMon project funded by the German Research Foundation.

DATA AVAILABILITY STATEMENT

The data that supports the findings of this study are available in the supplementary material of this article.

CONFLICTS OF INTEREST

The authors declare no conflict of interest.

ORCID

Shawan Chowdhury  <http://orcid.org/0000-0003-2936-5786>

Li Yang  <https://orcid.org/0000-0003-1654-4806>

Sei-Woong Choi  <http://orcid.org/0000-0001-6326-399X>

REFERENCES

- Amano, T., Berdejo-Espinola, V., Christie, A.P., Willott, K., Akasaka, M., Báldi, A. et al. (2021) Tapping into non-English-language science for the conservation of global biodiversity. *PLoS Biology*, 19, e3001296.
- Amano, T., González-Varo, J.P. & Sutherland, W.J. (2016) Languages are still a major barrier to global science. *PLoS Biology*, 14, e2000933.
- Amano, T., Lamming, J.D. & Sutherland, W.J. (2016) Spatial gaps in global biodiversity information and the role of citizen science. *BioScience*, 66, 393–400.
- Amano, T. & Sutherland, W.J. (2013) Four barriers to the global understanding of biodiversity conservation: wealth, language, geographical location and security. *Proceedings of the Royal Society B: Biological Sciences*, 280, 20122649.
- Baker, R. (1978) *Evolutionary ecology of animal migration*. New York: Holmes & Meier Publishers, p. 1012.
- Bartel, R.A., Oberhauser, K.S., De Roode, J.C. & Altizer, S.M. (2011) Monarch butterfly migration and parasite transmission in eastern North America. *Ecology*, 92, 342–351.
- Beebe, W. (1949a) Insect migration at rancho grande in north central Venezuela, general account. *Zoologica*, 34, 107–110.
- Beebe, W. (1949b) The swifts of rancho grande, north-central Venezuela, with special reference to migration. *Zoologica*, 34, 53–62.
- Beebe, W. (1950a) Migration of Danaidae, Ithomiidae, Acraeidae and Heliconidae (butterflies) at rancho grande, north-central Venezuela. *Zoologica*, 35, 57–68.
- Beebe, W. (1950b) Migration of Pieridae (butterflies) through Portachuelo pass, rancho grande, north-central Venezuela. *Zoologica*, 35, 189–196.
- Beebe, W. (1951) Migration of Nymphalidae (Nymphalinae), Brassolidae, Morphidae, Libytheidae, Satyridae, Riodinidae, Lycaenidae And Hesperidae (Butterflies) through Portachuelo pass, rancho grande, north-central Venezuela. *Zoologica: Scientific Contributions of the New York Zoological Society*. 36, 1–16.
- Boles, L.C. & Lohmann, K.J. (2003) True navigation and magnetic maps in spiny lobsters. *Nature*, 421, 60–63.
- Bonney, R., Cooper, C.B., Dickinson, J., Kelling, S., Phillips, T., Rosenberg, K.V. et al. (2009) Citizen science: a developing tool for expanding science knowledge and scientific literacy. *BioScience*, 59, 977–984.
- Bowlin, M.S., Bisson, I.A., Shamoun-Baranes, J., Reichard, J.D., Sapir, N., Marra, P.P. et al. (2010) Grand challenges in migration biology. *Integrative and Comparative Biology*, 50, 261–279.
- Brattström, O., Åkesson, S. & Bensch, S. (2010) AFLP reveals cryptic population structure in migratory European red admirals (*Vanessa atalanta*). *Ecological Entomology*, 35, 248–252.
- Brattström, O., Bensch, S., Wassenaar, L.I., Hobson, K.A. & Åkesson, S. (2010) Understanding the migration ecology of European red admirals *Vanessa atalanta* using stable hydrogen isotopes. *Ecography*, 33, 720–729.
- Brattström, O., Kjellén, N., Alerstam, T. & Åkesson, S. (2008) Effects of wind and weather on red admiral, *Vanessa atalanta*, migration at a coastal site in Southern Sweden. *Animal Behaviour*, 76, 335–344.
- Brower, L.P. (1995) Understanding and misunderstanding the migration of the monarch butterfly (nymphalidae) in North America: 1857–1995. *Journal of the Lepidopterists' Society*, 49, 304–385.
- Brower, L.P., Fink, L.S. & Walford, P. (2006) Fueling the fall migration of the monarch butterfly. *Integrative and Comparative Biology*, 46, 1123–1142.
- Brussard, P.F. & Ehrlich, P.R. (1970) Adult behavior and population structure in *Erebia epipsodea* (Lepidoptera: Satyrinae). *Ecology*, 51, 880–885.
- Callaghan, C.T., Poore, A.G.B., Mesaglio, T., Moles, A.T., Nakagawa, S., Roberts, C. et al. (2020) Three frontiers for the future of biodiversity research using citizen science data. *BioScience*, 71, 55–63.
- Calvert, W.H. (2001) Monarch butterfly (*Danaus plexippus* L., nymphalidae) fall migration: flight behaviour and direction in relation to celestial and physiographic cues. *Journal of the Lepidopterists' Society*, 55, 162–168.
- Cant, E.T., Smith, A.D., Reynolds, D.R. & Osborne, J.L. (2005) Tracking butterfly flight paths across the landscape with harmonic radar. *Proceedings of the Royal Society B: Biological Sciences*, 272, 785–790.
- Chapman, J.W. & Drake, V.A. (2019) Insect migration. In: Choe, J.C. *Encyclopedia of Animal Behavior*, 2nd ed. Amsterdam: Elsevier, Academic Press, Vol 3, pp. 573–580.
- Chapman, J.W., Drake, V.A. & Reynolds, D.R. (2011) Recent insights from radar studies of insect flight. *Annual Review of Entomology*, 56, 337–356.
- Chapman, J.W., Nesbit, R.L., Burgin, L.E., Reynolds, D.R., Smith, A.D., Middleton, D.R. et al. (2010) Flight orientation behaviors promote optimal migration trajectories in high-flying insects. *Science*, 327, 682–685.
- Chapman, J.W., Reynolds, D.R. & Wilson, K. (2015) Long-range seasonal migration in insects: mechanisms, evolutionary drivers and ecological consequences. *Ecology Letters*, 18, 287–302.
- Chernetsov, N., Kishkinev, D. & Mouritsen, H. (2008) A long-distance avian migrant compensates for longitudinal displacement during spring migration. *Current Biology*, 18, 188–190.
- Chester, C.C., Lien, A.M., Sundberg, J., Diffendorfer, J.E., Gonzalez-Duarte, C., Mattsson, B.J. et al. (2022) Using ecosystem services to identify inequitable outcomes in migratory species conservation. *Conservation Letters*, e12920.
- Chowdhury, S. (2023) Threatened species could be more vulnerable to climate change in tropical countries. *Science of the Total Environment*, 858, 159989. Available at: <https://doi.org/10.1016/j.scitotenv.2022.159989>
- Chowdhury, S., Aich, U., Rokonuzzaman, M., Alam, S., Das, P., Siddika, A. et al. (2022) A social media fix to the wallacean shortfall. *Research Square*. [Preprint] Available at: <https://doi.org/10.21203/rs.3.rs-1991321/v1>

- Chowdhury, S., Alam, S., Chowdhury, S.U., Rokonzaman, M., Shahriar, S.A., Shome, A.R. et al. (2021) Butterflies are weakly protected in a mega-populated country, Bangladesh. *Global Ecology and Conservation*, 26, e01484.
- Chowdhury, S., Braby, M.F., Fuller, R.A. & Zalucki, M.P. (2021) Coasting along to a wider range: niche conservatism in the recent range expansion of the tawny coster, *Acraea terpsicore* (Lepidoptera: Nymphalidae). *Diversity and Distributions*, 27, 402–415.
- Chowdhury, S., Cardillo, M., Chapman, J., Green, D., Norris, R., Riva, F. et al. (2022) Protected areas fail to cover the full annual cycle of migratory butterflies. <https://doi.org/10.21203/rs.3.rs-2256859/v1>
- Chowdhury, S., Fuller, R.A., Dingle, H., Chapman, J.W. & Zalucki, M.P. (2021) Migration in butterflies: a global overview. *Biological Reviews*, 96, 1462–1483.
- Chowdhury, S., Gonzalez, K., Aytekin, M.Ç.K., Baek, S.-Y., Belcik, M. & Bertolino, S. et al. (2022) Growth of non-English-language literature on biodiversity conservation. *Conservation Biology*, 36, e13883.
- Chowdhury, S., Jennions, M.D., Zalucki, M.P., Maron, M., Watson, J.E. & Fuller, R.A. (2022) Protected areas and the future of insect conservation. *Trends in Ecology and Evolution*. Available at: <https://doi.org/10.1016/j.tree.2022.09.004>
- Chowdhury, S., Zalucki, M.P., Amano, T., Woodworth, B.K., Venegas-Li, R. & Fuller, R.A. (2021) Seasonal spatial dynamics of butterfly migration. *Ecology Letters*, 24, 1814–1823.
- Convention on Biological Diversity. (2020) *Update of the zero draft of the post-2020 global biodiversity framework*. Montreal: Convention on Biological Diversity. UNEP-CBD. p. 32
- Crawford, A. (1949) Radar reflections in the lower atmosphere. *Proceedings of the Institution of Radio Engineers*, 37, 404–405.
- Darwin, C. (1839) *Journal of researches into the geology and natural history of the various countries visited by H. M. S. Beagle*. New York: Hafner Pub. Co, 185.
- Didham, R.K., Ghazoul, J., Stork, N.E. & Davis, A.J. (1996) Insects in fragmented forests: a functional approach. *Trends in Ecology & Evolution*, 11, 255–260.
- Dingle, H. (2014) *Migration: the biology of life on the move*, 2nd edition. United Kingdom: Oxford University Press. p. 352
- Dingle, H. (2009) Migration. In: Resh, V.H. & Cardé, R.T. *Encyclopedia of Insects*, 2nd edition. United States: Academic Press, Elsevier. pp. 628–633
- Dingle, H., Zalucki, M.P., Rochester, W.A. & Armijo-Prewitt, T. (2005) Distribution of the monarch butterfly, *Danaus plexippus* (L.) (Lepidoptera: Nymphalidae), in Western North America: monarch butterflies in western North America. *Biological Journal of the Linnean Society*, 85, 491–500.
- Drake, V.A. & Reynolds, D.R. (2012) *Radar entomology: observing insect flight and migration*. Cab International. p. 489
- Dreyer, D., El Jundi, B., Kishkinev, D., Suchentrunk, C., Campostrini, L., Frost, B.J. et al. (2018) Evidence for a southward autumn migration of nocturnal noctuid moths in central Europe. *Journal of Experimental Biology*, 221, jeb179218.
- Dudley, R. & Srygley, R. (1994) Flight physiology of neotropical butterflies: allometry of airspeeds during natural free flight. *Journal of Experimental Biology*, 191, 125–139.
- Eanes, W.F. & Koehn, R.K. (1978) An analysis of genetic structure in the monarch butterfly. *Evolution; international journal of organic evolution*, 32, 784–797.
- Egger, M., Zellweger-Zähner, T., Schneider, M., Junker, C., Lengeler, C. & Antes, G. (1997) Language bias in randomised controlled trials published in English and German. *The Lancet*, 350, 326–329.
- Faaborg, J., Holmes, R.T., Anders, A.D., Bildstein, K.L., Dugger, K.M., Gauthreaux, S.A. et al. (2010) Conserving migratory land birds in the new world: do we know enough? *Ecological Applications*, 20, 398–418.
- Fletcher, T. (1936) Marked migrant butterflies. *Entomologist's Record*, 48, 105–106.
- Flockhart, D.T.T., Pichancourt, J.B., Norris, D.R. & Martin, T.G. (2015) Unravelling the annual cycle in a migratory animal: breeding-season habitat loss drives population declines of monarch butterflies. *Journal of Animal Ecology*, 84, 155–165.
- Flockhart, D.T.T., Wassenaar, L.I., Martin, T.G., Hobson, K.A., Wunder, M.B. & Norris, D.R. (2013) Tracking multi-generational colonization of the breeding grounds by monarch butterflies in eastern North America. *Proceedings of the Royal Society B: Biological Sciences*, 280, 20131087.
- Fox, R. (2013) The decline of moths in Great Britain: a review of possible causes. *Insect Conservation and Diversity*, 6, 5–19.
- Fox, R., Brereton, T.M., Asher, J., August, T.A., Botham, M.S., Bourn, N.A.D. et al. (2015) The state of the UK's butterflies. Butterfly conservation and the centre for ecology & hydrology, Wareham, Dorset, 2015, p. 28.
- Freedman, M.G., Choquette, S.L., Ramirez, S.R., Strauss, S.Y., Hunter, M.D. & Vannette, R.L. (2021) Population-specific patterns of toxin sequestration in monarch butterflies from around the world. *bioRxiv*. [Preprint] Available at: <https://doi.org/10.1101/2021.10.15.464593>
- Freedman, M.G., Dingle, H., Tabuloc, C.A., Chiu, J.C., Yang, L.H. & Zalucki, M.P. (2017) Non-migratory monarch butterflies, *Danaus plexippus* (L.), retain developmental plasticity and a navigational mechanism associated with migration. *Biological Journal of the Linnean Society*, 123, 265–278.
- Freedman, M.G., de Roode, J.C., Forister, M.L., Kronforst, M.R., Pierce, A.A., Schultz, C.B. et al. (2021) Are eastern and Western monarch butterflies distinct populations? A review of evidence for ecological, phenotypic, and genetic differentiation and implications for conservation. *Conservation Science Practice*, 3, e432.
- Gao, B., Hedlund, J., Reynolds, D.R., Zhai, B., Hu, G. & Chapman, J.W. (2020) The 'migratory connectivity' concept, and its applicability to insect migrants. *Movement Ecology*, 8, 48.
- García-Berro, A., Talla, V., Vila, R., Kar Wai, H., Shipilina, D. & Talavera, G. (2022) Migratory behaviour is positively associated with genetic diversity in butterflies. *Molecular Ecology*. Available at: <https://doi.org/10.1101/2022.06.21.496610>
- Gaston, K.J. (1991) The magnitude of global insect species richness. *Conservation Biology*, 5, 283–296.
- Gatehouse, A.G. (1997) Behavior and ecological genetics of wind-borne migration by insects. *Annual Review of Entomology*, 42, 475–502.
- Gibo, D.L. (1981) Some observations on soaring flight in the mourning cloak butterfly (*Nymphalis antiopa* L.) in Southern Ontario. *Journal of the New York Entomological Society*, 89, 98–101.
- Gibo, D.L. & Pallett, M.J. (1979) Soaring flight of monarch butterflies, *Danaus plexippus* (Lepidoptera: Danaidae), during the late summer migration in Southern Ontario. *Canadian Journal of Zoology*, 57, 1393–1401.
- Gould, J.L. & Gould, C.G. (2012) *Nature's compass: the mystery of animal navigation*. Princeton, NJ: Princeton University Press.
- Grant, T.J., Parry, H.R., Zalucki, M.P. & Bradbury, S.P. (2018) Predicting monarch butterfly (*Danaus plexippus*) movement and egg-laying with a spatially-explicit agent-based model: the role of monarch perceptual range and spatial memory. *Ecological Modelling*, 374, 37–50.
- Guerra, P.A. & Reppert, S.M. (2015) Sensory basis of lepidopteran migration: focus on the monarch butterfly. *Current Opinion in Neurobiology*, 34, 20–28.
- Guilford, T. & Taylor, G.K. (2014) The Sun compass revisited. *Animal Behaviour*, 97, 135–143.
- Gwinner, E. & Wiltschko, W. (1978) Endogenously controlled changes in migratory direction of the garden warbler, *Sylvia borin*. *Journal of Comparative Physiology A*, 125, 267–273.

- Habel, J.C., Ulrich, W., Biburger, N., Seibold, S. & Schmitt, T. (2019) Agricultural intensification drives butterfly decline. *Insect Conservation and Diversity*, 12, icad.12343.
- Hallmann, C.A., Sorg, M., Jongejans, E., Siepel, H., Hoffland, N., Schwan, H. et al. (2017) More than 75 percent decline over 27 years in total flying insect biomass in protected areas. *PLoS One*, 12, e0185809.
- Hanski, I. & Thomas, C.D. (1994) Metapopulation dynamics and conservation: a spatially explicit model applied to butterflies. *Biological Conservation*, 68, 167–180.
- Haskell, P.T. (1970) The future of locust and grasshopper control. *Outlook on Agriculture*, 6, 166–174.
- Hendrix, W.H., Mueller, T.F., Phillips, J.R. & Davis, O.K. (1987) Pollen as an indicator of long-distance movement of *heliopsis zea* (lepidoptera: noctuidae). *Environmental Entomology*, 16, 1148–1151.
- Hobson, K.A., Kusack, J.W. & Mora-Alvarez, B.X. (2021) Origins of six species of butterflies migrating through northeastern Mexico: new insights from stable-isotope ($\delta^2\text{H}$) analyses and a call for documenting butterfly migrations. *Diversity*, 13, 102.
- Holland, R.A., Wikelski, M. & Wilcove, D.S. (2006) How and why do insects migrate? *Science*, 313, 794–796.
- Holman, L., Head, M.L., Lanfear, R. & Jennions, M.D. (2015) Evidence of experimental bias in the life sciences: why we need blind data recording. *PLoS Biology*, 13, e1002190.
- Hu, G., Lim, K.S., Horvitz, N., Clark, S.J., Reynolds, D.R., Sapir, N. et al. (2016) Mass seasonal bioflows of high-flying insect migrants. *Science*, 354, 1584–1587.
- Hu, G., Stefanescu, C., Oliver, T.H., Roy, D.B., Brereton, T., Van Swaay, C. et al. (2021) Environmental drivers of annual population fluctuations in a trans-Saharan insect migrant. *Proceedings of the National Academy of Sciences of the United States of America*, 118, e2102762118.
- Jarić, I., Correia, R.A., Brook, B.W., Buettel, J.C., Courchamp, F., Di Minin, E. et al. (2020) Iecology: harnessing large online resources to generate ecological insights. *Trends in Ecology & Evolution*, 35, 630–639.
- Jennions, M.D., Lortie, C.J., Rosenberg, M.S. & Rothstein, H.R. (2013) Publication and related biases. In: Koricheva, J., Gurevitch, J. & Mengersen, K. (Eds.) *Handbook of meta-analysis in ecology and evolution*. Princeton, NJ: Princeton University Press, pp. 207–236.
- Jennions, M.D. & Møller, A.P. (2002a) Relationships fade with time: a meta-analysis of temporal trends in publication in ecology and evolution. *Proceedings of Royal Society of London Biological Sciences*, 269, 43–48.
- Jennions, M.D. & Møller, A.P. (2002b) Publication bias in ecology and evolution: an empirical assessment using the 'trim and fill' method. *Biological Reviews*, 77, 211–222.
- Jia, H., Liu, Y., Li, X., Li, H., Pan, Y., Hu, C. et al. (2022) Windborne migration amplifies insect-mediated pollination services. *eLife*, 11, e76230.
- Johnson, C.G. (1963) Physiological factors in insect migration by flight. *Nature*, 198, 423–427.
- Johnson, C.G. (1966) A functional system of adaptive dispersal by flight. *Annual Review of Entomology*, 11, 233–260.
- Johnson, C.G. (1969) *Migration and dispersal of insects by flight*. London: Methuen and Co Ltd.
- Juhász, E., Gó, Á., Bali, D., Kerékgyártó, F., Katona, G. & Végvári, Z. (2020) Long-term temporal patterns in flight activities of a migrant diurnal butterfly. *Insect Science*, 28, 839–849.
- Kanazawa, I., Cheng, W.W.W., Pun, H.S.F., Sakiyama, Y. & Doi, H. (2015) First migration record of chestnut tiger butterfly, *parantica sita nipponica* (moore, 1883) (lepidoptera: nymphalidae: danainae) from Japan to Hong Kong and longest recorded movement by the species. *Pan-Pacific Entomologist*, 91, 91–97.
- Kennedy, J. (1958) The experimental analysis of aphid behaviour and its bearing on current theories of instinct. In: *Proceedings of the Tenth International Congress of Entomology*, Montreal II, pp. 397–404.
- Kennedy, J.S. & Booth, C.O. (1963) Free flight of aphids in the laboratory. *Journal of Experimental Biology*, 40, 67–85.
- Kennedy, J.S. & Booth, C.O. (1964) Co-ordination of successive activities in an aphid. depression of settling after flight. *Journal of Experimental Biology*, 41, 805–824.
- Kennedy, J.S. & Ludlow, A.R. (1974) Co-ordination of two kinds of flight activity in an aphid. *Journal of Experimental Biology*, 61, 173–196.
- Kennedy, J.S. (1985) Migration: behavioral and ecological. In: Rankin, M. A. (Ed.) *Migration: mechanisms and adaptive significance. Contributions in marine science* 27. Austin: Marine Science Institute, University of Texas, pp. 5–26.
- Kirby, J.S., Stattersfield, A.J., Butchart, S.H.M., Evans, M.I., Grimmett, R.F.A., Jones, V.R. et al. (2008) Key conservation issues for migratory land-and waterbird species on the world's major flyways. *Bird Conservation International*, 18, S49–S73.
- Knight, S.M., Pitman, G.M., Flockhart, D.T.T. & Norris, D.R. (2019) Radio-tracking reveals how wind and temperature influence the pace of daytime insect migration. *Biology Letters*, 15, 20190327.
- Konno, K., Akasaka, M., Koshida, C., Katayama, N., Osada, N., Spake, R. et al. (2020) Ignoring non-English-language studies May bias ecological meta-analyses. *Ecology and Evolution*, 10, 6373–6384.
- Krogh, A. & Weis-Fogh, T. (1952) A roundabout for studying sustained flight of locusts. *Journal of Experimental Biology*, 29, 211–219.
- Larsen, T.B. (1975) Provisional notes on migrant butterflies in Lebanon. *Atalanta*, 62, 62–74.
- Larsen, T.B. (1977) A migration of *Anapheis aurota* (F.) in Kenya (lep.: pieridae). *Deutsche Entomologische Zeitschrift*, 24, 419–422.
- Larsen, T.B. (1982) A migration of *Catopsilia florella* F. in Ethiopia. *Atalanta*, 13, 41.
- Larsen, T.B. (1984) Butterflies of Saudi Arabia and its neighbours. *Stacey International*.
- Larsen, T.B. (1986) Tropical butterflies of the Mediterranean. *Nota Lepidopterologica*, 9, 63–77.
- Larsen, T.B. (1987) The butterflies of the nilgiri mountains of Southern India (lepidoptera: rhopalocera). *Journal of the Bombay Natural History Society*, 84, 291–316.
- Larsen, T.B. (1988a) Butterfly migration activity in southwestern India during September and October of 1986. *Atalanta*, 18, 283–289.
- Larsen, T.B. (1988b) A butterfly migration in Kenya, May 1987. *Atalanta*, 18, 291–292.
- Larsen, T.B. (1992a) The butterflies of the gemsbok national park in Botswana (Lepidoptera–Rhopalocera). *Botswana Notes and Records*, 24, 181–203.
- Larsen, T.B. (1992b) A migration of *Catopsilia florella* (F.) in Botswana; morphological differences between migratory and non-migratory populations (lepidoptera: pieridae). *Tropical Lepidoptera Research*, 3, 2–11.
- Larsen, T.B. (1992c) Temporary prey-specialization on migrant butterflies by bluecheeked bee-eaters. *Entomologist's Record and Journal of Variation*, 104, 253–255.
- Larsen, T.B. (1995) A large-scale migration of the African skipper *andronymus gander evans*, 1946 near calabar, Nigeria (lepidoptera: hesperiidae). *Entomologist's Record and Journal of Variation*, 107, 263–266.
- Larsen, T.B. (2004) *Butterflies of Bangladesh: an annotated checklist*. Vol 158. IUCN, the World Conservation Union, Bangladesh Country Office.
- Larsen, T.B., Van Hao, L. & Van Lap, D. (2005) Butterfly diversity in cuc Phuong national park. *Biodiversity*, 6, 3–14.
- Levin, D.A., Kerster, H.W. & Niedzlek, M. (1971) Pollinator flight directionality and its effect on pollen flow. *Evolution*, 25, 113–118.
- Liedvogel, M., Åkesson, S. & Bensch, S. (2011) The genetics of migration on the move. *Trends in Ecology & Evolution*, 26, 561–569.
- Lohmann, K.J. (2012) Q&A: animal behaviour: magnetic-field perception. *Nature*, 464, 1140–1142.

- Lohmann, K.J., Putman, N.F. & Lohmann, C.M. (2012) The magnetic map of hatchling loggerhead sea turtles. *Current Opinion in Neurobiology*, 22, 336–342.
- López-Hoffman, L., Chester, C.C., Semmens, D.J., Thogmartin, W.E., Rodríguez-McGoffin, M.S., Merideth, R. et al. (2017) Ecosystem services from transborder migratory species: implications for conservation governance. *Annual Review of Environment and Resources*, 42, 509–539.
- Lyons, J.I., Pierce, A.A., Barribeau, S.M., Sternberg, E.D., Mongue, A.J. & de Roode, J.C. (2012) Lack of genetic differentiation between monarch butterflies with divergent migration destinations. *Molecular Ecology*, 21, 3433–3444.
- Malcolm, S.B. (2018) Anthropogenic impacts on mortality and population viability of the monarch butterfly. *Annual Review of Entomology*, 63, 277–302.
- Malcolm, S.B., Cockrell, B.J. & Brower, L.P. (1989) Cardenolide fingerprint of monarch butterflies reared on common milkweed, *Asclepias syriaca* L. *Journal of Chemical Ecology*, 15, 819–853.
- Malcolm, S.B., Cockrell, B.J. & Brower, L.P. (1993) Spring recolonization of eastern North America by the monarch butterfly: successive brood or single sweep migration? In Malcolm, S.B. & Zalucki, M.P. (eds), *Biology and Conservation of the Monarch Butterfly*. Natural History Museum of Los Angeles County, Science Series 38, pp. 253–267.
- Malcolm, S.B. & Slager, B.H. (2015) Migration and host plant use by the southern monarch, *Danaus erippus*. In: Oberhauser, K.A., Nail, K.R. & Altizer, S. (Eds.) *Monarchs in a changing world: Biology and conservation of an iconic butterfly*. Ithaca, NY: Cornell University Press. pp. 225–235.
- Malcolm, S.B., Vargas, N.R., Rowe, L., Stevens, J., Armagost, J.E. & Johnson, A.C. (2018) Sequential partial migration across monarch generations in Michigan. *Animal Migration*, 5, 104–114.
- Di Marco, M., Chapman, S., Althor, G., Kearney, S., Besancon, C., Butt, N. et al. (2017) Changing trends and persisting biases in three decades of conservation science. *Global Ecology and Conservation*, 10, 32–42.
- Martin, T.G., Chadès, I., Arcese, P., Marra, P.P., Possingham, H.P. & Norris, D.R. (2007) Optimal conservation of migratory species. *PLoS One*, 2, e751.
- Mason, S.C., Hill, J.K., Thomas, C.D., Powney, G.D., Fox, R., Brereton, T. et al. (2018) Population variability in species can be deduced from opportunistic citizen science records: a case study using British butterflies. *Insect Conservation and Diversity*, 11, 131–142.
- McGeoch, M.A. (1998) The selection, testing and application of terrestrial insects as bioindicators. *Biological Reviews of the Cambridge Philosophical Society*, 73, 181–201.
- Meitner, C.J., Brower, L.P. & Davis, A.K. (2004) Migration patterns and environmental effects on stopover of monarch butterflies (Lepidoptera, nymphalidae) at peninsula point, Michigan. *Environmental Entomology*, 33, 249–256.
- Menchetti, M., Guéguen, M. & Talavera, G. (2019) Spatio-temporal ecological niche modelling of multigenerational insect migrations. *Proceedings of the Royal Society B: Biological Sciences*, 286, 20191583.
- Menz, M.H.M., Reynolds, D.R., Gao, B., Hu, G., Chapman, J.W. & Wotton, K.R. (2019) Mechanisms and consequences of partial migration in insects. *Frontiers in Ecology and Evolution*, 7, 403.
- Merlin, C., Heinze, S. & Reppert, S.M. (2012) Unraveling navigational strategies in migratory insects. *Current Opinion in Neurobiology*, 22, 353–361.
- Mikkola, K. (1971) Pollen analysis as a means of studying the migrations of lepidoptera. *Annales Entomologici Fennici*, 37, 136–139.
- Mikkola, K. (2003) Red admirals *Vanessa atalanta* (Lepidoptera: nymphalidae) select Northern winds on southward migration. *Annales Entomologici Fennici*, 14, 15–24.
- Minter, M., Pearson, A., Lim, K.S., Wilson, K., Chapman, J.W. & Jones, C.M. (2018) The tethered flight technique as a tool for studying life-history strategies associated with migration in insects. *Ecological Entomology*, 43, 397–411.
- Mouritsen, H. (2018) Long-distance navigation and magnetoreception in migratory animals. *Nature*, 558, 50–59.
- Mouritsen, H., Derbyshire, R., Stalleicken, J., Mouritsen, O.Ø., Frost, B.J. & Norris, D.R. (2013) An experimental displacement and over 50 years of tag-recoveries show that monarch butterflies are not true navigators. *Proceedings of the National Academy of Sciences of the United States of America*, 110, 7348–7353.
- Mouritsen, H. & Frost, B.J. (2002) Virtual migration in tethered flying monarch butterflies reveals their orientation mechanisms. *Proceedings of the National Academy of Sciences of the United States of America*, 99, 10162–10166.
- Munro, U., Wiltshko, W. & Ford, H.A. (1993) Changes in the migratory direction of yellow-faced honeyeaters *Lichenotomus chrysops* (meliphagidae) during autumn migration. *Emu—Austral Ornithology*, 93, 59–62.
- Møller, A.P. & Jennions, M.D. (2001) Testing and adjusting for publication bias. *Trends in Ecology & Evolution*, 16, 580–586.
- Nesbit, R.L., Hill, J.K., Woiwod, I.P., Sivell, D., Bensusan, K.J. & Chapman, J.W. (2009) Seasonally adaptive migratory headings mediated by a sun compass in the painted lady butterfly, *Vanessa cardui*. *Animal Behaviour*, 78, 1119–1125.
- Ning, Q., Qing, M. & Wenxiang, H. (2018) 生物钟的调控 regulation of circadian clock. *Interdisciplinary Science Letters*, 2, 93.
- Núñez, M.A., Chiuffo, M.C., Pauchard, A. & Zenni, R.D. (2021) Making ecology really global. *Trends in Ecology & Evolution*, 36, 766–769.
- Oberhauser, K.S. & Solensky, M.J. (2004) *Monarch butterfly biology & conservation*. Ithaca: Cornell University Press.
- Oberhauser, K.S., Taylor, O.R., Reppert, S.M., Dingle, H., Nail, K.R., Pyle, R.M. et al. (2013) Are monarch butterflies true navigators? the jury is still out. *Proceedings of the National Academy of Sciences of the United States of America*, 110, E3680.
- Ovaskainen, O., Smith, A.D., Osborne, J.L., Reynolds, D.R., Carreck, N.L., Martin, A.P. et al. (2008) Tracking butterfly movements with harmonic radar reveals an effect of population age on movement distance. *Proceedings of the National Academy of Sciences of the United States of America*, 105, 19090–19095.
- Patterson, T., Thomas, L., Wilcox, C., Ovaskainen, O. & Matthiopoulos, J. (2008) State-space models of individual animal movement. *Trends in Ecology & Evolution*, 23, 87–94.
- Perdeck, A. (1958) Two types of orientation in migrating starlings, *Sturnus vulgaris* L. and *Chaffinches*, *fringilla coelebs* L. as revealed by displacement experiments. *Ardea*, 55, 1–3.
- Phillips, J.B., Adler, K. & Borland, S.C. (1995) True navigation by an amphibian. *Animal Behaviour*, 50, 855–858.
- Pierce, A.A., Altizer, S., Chamberlain, N.L., Kronforst, M.R. & de Roode, J.C. (2015) Unraveling the mysteries of monarch migration and global dispersal through molecular genetic techniques, *Monarchs in a Changing World: Biology and Conservation of an Iconic Butterfly*. Cornell University Press, pp. 257–267.
- Pierce, A.A., Zalucki, M.P., Bangura, M., Udawatta, M., Kronforst, M.R., Altizer, S. et al. (2014) Serial founder effects and genetic differentiation during worldwide range expansion of monarch butterflies. *Proceedings of the Royal Society B: Biological Sciences of the United States of America*, 281, 20142230.
- Putman, N.F., Endres, C.S., Lohmann, C.M.F. & Lohmann, K.J. (2011) Longitude perception and bicoordinate magnetic maps in sea turtles. *Current Biology*, 21, 463–466.
- Pyšek, P., Richardson, D.M., Pergl, J., Jarošík, V., Sixtová, Z. & Weber, E. (2008) Geographical and taxonomic biases in invasion ecology. *Trends in Ecology & Evolution*, 23, 237–244.
- Rainey, R.C. (1955) Observation of desert locust swarms by radar. *Nature*, 175, 77.
- Reich, M.S., Flockhart, D.T.T., Norris, D.R., Hu, L. & Bataille, C.P. (2021) Continuous-surface geographic assignment of migratory animals using strontium isotopes: a case study with monarch butterflies. *Methods in Ecology and Evolution*, 12, 2445–57.

- Reppert, S.M., Geiger, R.J. & Merlin, C. (2010) Navigational mechanisms of migrating monarch butterflies. *Trends in Neurosciences*, 33, 399–406.
- Reppert, S.M. & de Roode, J.C. (2018) Demystifying monarch butterfly migration. *Current Biology*, 28, R1009–R1022.
- Reppert, S.M., Zhu, H. & White, R.H. (2004) Polarized light helps monarch butterflies navigate. *Current Biology*, 14, 155–158.
- Reynolds, D.R., Chapman, J.W. & Harrington, R. (2006) The migration of insect vectors of plant and animal viruses. *Advances in Virus Research*, 67, 453–517.
- Reynolds, M.D., Sullivan, B.L., Hallstein, E., Matsumoto, S., Kelling, S., Merrifield, M. et al. (2017) Dynamic conservation for migratory species. *Science Advances*, 3, e1700707.
- Richter, J.H., Jensen, D.R., Noonkester, V.R., Kreasky, J.B., Stimmann, M.W. & Wolf, W.W. (1973) Remote radar sensing: atmospheric structure and insects. *Science*, 180, 1176–1178.
- Robinson, W.D., Bowlin, M.S., Bisson, I., Shamoun-Baranes, J., Thorup, K., Diehl, R.H. et al. (2010) Integrating concepts and technologies to advance the study of bird migration. *Frontiers in Ecology and the Environment*, 8, 354–361.
- Rogg, K.A., Taylor, O.R. & Gibo, D.L. (1999) The 1997 North American Conference on the Monarch Butterfly. Commission for Environmental Cooperation, Montreal, Canada, pp. 133–138.
- Runge, C.A., Martin, T.G., Possingham, H.P., Willis, S.G. & Fuller, R.A. (2014) Conserving mobile species. *Frontiers in Ecology and the Environment*, 12, 395–402.
- Satterfield, D.A., Sillett, T.S., Chapman, J.W., Altizer, S. & Marra, P.P. (2020) Seasonal insect migrations: massive, influential and overlooked. *Frontiers in Ecology and the Environment*, 18, 335–344.
- Sauman, I., Briscoe, A.D., Zhu, H., Shi, D., Froy, O., Stalleicken, J. et al. (2005) Connecting the navigational clock to sun compass input in monarch butterfly brain. *Neuron*, 46, 457–467.
- Schaefer, G. (1969) Radar studies of locust, moth and butterfly migration in the Sahara. *Proceedings of Royal Entomological Society C*, 34, 39–40.
- Schuttler, S.G., Sorensen, A.E., Jordan, R.C., Cooper, C. & Schwartz, A. (2018) Bridging the nature gap: can citizen science reverse the extinction of experience? *Frontiers in Ecology and the Environment*, 16, 405–411.
- Semmens, B.X., Semmens, D.J., Thogmartin, W.E., Wiederholt, R., López-Hoffman, L., Diffendorfer, J.E. et al. (2016) Quasi-extinction risk and population targets for the eastern, migratory population of monarch butterflies (*Danaus plexippus*). *Scientific Reports*, 6, 23265.
- Semmens, D.J., Diffendorfer, J.E., López-Hoffman, L. & Shapiro, C.D. (2011) Accounting for the ecosystem services of migratory species: quantifying migration support and spatial subsidies. *Ecological Economics*, 70, 2236–2242.
- Slager, B.H. & Malcolm, S.B. (2015) Evidence for partial migration in the Southern monarch butterfly, *Danaus erippus*, in Bolivia and Argentina. *Biotropica*, 47, 355–362.
- Smith, D.A. (2014) *African queens and their kin: a Darwinian odyssey*. Taunton: Brambleby Books.
- Sodhi, N.S., Posa, M.R.C., Lee, T.M., Bickford, D., Koh, L.P. & Brook, B.W. (2010) The state and conservation of Southeast Asian biodiversity. *Biodiversity and Conservation*, 19(2), 317–328.
- Soroye, P., Ahmed, N. & Kerr, J.T. (2018) Opportunistic citizen science data transform understanding of species distributions, phenology, and diversity gradients for global change research. *Global Change Biology*, 24, 5281–5291.
- Sparks, T.H., Dennis, R.L.H., Croxton, P.J. & Cade, M. (2007) Increased migration of lepidoptera linked to climate change. *European Journal of Entomology*, 104, 139–143.
- Sparks, T.H., Roy, D.B. & Dennis, R.L.H. (2005) The influence of temperature on migration of lepidoptera into Britain. *Global Change Biology*, 11, 507–514.
- Srygley, R.B. (2001) Compensation for fluctuations in crosswind drift without stationary landmarks in butterflies migrating over seas. *Animal Behaviour*, 61, 191–203.
- Srygley, R.B. & Dudley, R. (2007) Optimal strategies for insects migrating in the flight boundary layer: mechanisms and consequences. *Integrative and Comparative Biology*, 48, 119–133.
- Srygley, R.B., Dudley, R., Oliveira, E.G. & Riveros, A.J. (2006) Experimental evidence for a magnetic sense in neotropical migrating butterflies (Lepidoptera: Pieridae). *Animal Behaviour*, 71, 183–191.
- Stalleicken, J., Mukhida, M., Labhart, T., Wehner, R., Frost, B. & Mouritsen, H. (2005) Do monarch butterflies use polarized skylight for migratory orientation? *Journal of Experimental Biology*, 208, 2399–408.
- Stefanescu, C., Alarcón, M. & Àvila, A. (2007) Migration of the painted lady butterfly, *Vanessa cardui*, to north-eastern Spain is aided by African wind currents. *Journal of Animal Ecology*, 76, 888–898.
- Stefanescu, C., Páramo, F., Åkesson, S., Alarcón, M., Ávila, A., Brereton, T. et al. (2013) Multi-generational long-distance migration of insects: studying the painted lady butterfly in the Western Palaearctic. *Ecography*, 36, 474–486.
- Stefanescu, C., Soto, D.X., Talavera, G., Vila, R. & Hobson, K.A. (2016) Long-distance autumn migration across the Sahara by painted lady butterflies: exploiting resource pulses in the tropical savannah. *Biology Letters*, 12, 20160561.
- Stefanescu, C., Ubach, A. & Wiklund, C. (2021) Timing of mating, reproductive status and resource availability in relation to migration in the painted lady butterfly. *Animal Behaviour*, 172, 145–153.
- Stenoien, C., Nail, K.R., Zalucki, J.M., Parry, H., Oberhauser, K.S. & Zalucki, M.P. (2018) Monarchs in decline: a collateral landscape-level effect of modern agriculture. *Insect Science*, 25, 528–541.
- Stork, N.E. (2018) How many species of insects and other terrestrial arthropods are there on earth? *Annual Review of Entomology*, 63, 31–45.
- Suchan, T., Talavera, G., Sáez, L., Ronikier, M. & Vila, R. (2019) Pollen metabarcoding as a tool for tracking long-distance insect migrations. *Molecular Ecology Resources*, 19, 149–162.
- Sullivan, B.L., Wood, C.L., Iliff, M.J., Bonney, R.E., Fink, D. & Kelling, S. (2009) eBird: A citizen-based bird observation network in the biological sciences. *Biological Conservation*, 142, 2282–2292.
- Talavera, G., Bataille, C., Benyamini, D., Gascoigne-Pees, M. & Vila, R. (2018) Round-trip across the Sahara: afrotropical painted lady butterflies recolonize the Mediterranean in early spring. *Biology Letters*, 14, 20180274.
- Tan, W.H., Acevedo, T., Harris, E.V., Alcaide, T.Y., Walters, J.R., Hunter, M.D. et al. (2019) Transcriptomics of monarch butterflies (*Danaus plexippus*) reveals that toxic host plants alter expression of detoxification genes and down-regulate a small number of immune genes. *Molecular Ecology*, 28, 4845–4863.
- Taylor, Jr., O.R., Pleasants, J.M., Grundel, R., Pecoraro, S.D., Lovett, J.P. & Ryan, A. (2020) Evaluating the migration mortality hypothesis using monarch tagging data. *Frontiers in Ecology and Evolution*, 8, 264.
- Thaxter, R. (1881) Notes on the swarming of danais archippus and other butterflies. *11th Annual Report of the Entomological Society of Ontario*, 1880, 35–36.
- Thogmartin, W.E., Wiederholt, R., Oberhauser, K., Drum, R.G., Diffendorfer, J.E., Altizer, S. et al. (2017) Monarch butterfly population decline in North America: identifying the threatening processes. *Royal Society Open Science*, 4, 170760.
- Thorup, K., Bisson, I.A., Bowlin, M.S., Holland, R.A., Wingfield, J.C., Ramenofsky, M. et al. (2007) Evidence for a navigational map stretching across the continental US in a migratory songbird. *Proceedings of the National Academy of Sciences of the United States of America*, 104, 18115–18119.
- Urquhart, F.A. (1941) A proposed method for marking migrant butterflies. *The Canadian Entomologist*, 73, 21–22.
- Urquhart, F.A. (1960) *The monarch butterfly*. Toronto: University of Toronto Press.

- Urquhart, F.A. & Urquhart, N.R. (1978)) autumnal migration routes of the eastern population of the monarch butterfly (*Danaus p. plexippus* L.; danaidae; lepidoptera) in North America to the overwintering site in the neovolcanic plateau of Mexico. *Canadian Journal of Zoology*, 56, 1759–1764.
- Vaughn, C.R. (1985) Birds and insects as radar targets: a review. *Proceedings of the IEEE*, 73, 205–227.
- Wagner, D.L. (2020) Insect declines in the anthropocene. *Annual Review of Entomology*, 65, 457–480.
- Wagner, D.L., Grames, E.M., Forister, M.L., Berenbaum, M.R. & Stopak, D. (2021) Insect decline in the anthropocene: death by a thousand cuts. *Proceedings of the National Academy of Sciences of the United States of America*, 118, e2023989118.
- Walker, T.J. (1978) Migration and re-migration of butterflies through north peninsular florida: quantification with malaise traps. *Journal of the Lepidopterists' Society*, 32, 178–190.
- Walker, T.J. (1985a) Permanent traps for monitoring butterfly migration: tests in Florida 1979–84. *Journal of the Lepidopterists' Society*, 39, 313–320.
- Walker, T.J. (1985b) Butterfly migration in the boundary layer. *Migration: Mechanisms and adaptive significance*, 27, 704–723.
- Walker, T.J. (1991) Butterfly migration from and to peninsular Florida. *Ecological Entomology*, 16, 241–252.
- Walker, T.J. (2001) Butterfly migrations in Florida: seasonal patterns and long-term changes. *Environmental Entomology*, 30, 1052–1060.
- Walker, T.J. & Lenczewski, B. (1989) An inexpensive portable trap for monitoring butterfly migration. *Journal of the Lepidopterists' Society*, 43, 289–298.
- WallisDeVries, M.F., Baxter, W. & Van Vliet, A.J.H. (2011) Beyond climate envelopes: effects of weather on regional population trends in butterflies. *Oecologia*, 167, 559–571.
- Walther, G.R., Post, E., Convey, P., Menzel, A., Parmesan, C., Beebee, T.J.C. et al. (2002) Ecological responses to recent climate change. *Nature*, 416, 389–395.
- Wassenaar, L.I. & Hobson, K.A. (1998) Natal origins of migratory monarch butterflies at wintering colonies in Mexico: new isotopic evidence. *Proceedings of the National Academy of Sciences of the United States of America*, 95, 15436–15439.
- Watson, J.E.M., Dudley, N., Segan, D.B. & Hockings, M. (2014) The performance and potential of protected areas. *Nature*, 515, 67–73.
- Webster, M.S., Marra, P.P., Haig, S.M., Bensch, S. & Holmes, R.T. (2002) Links between worlds: unraveling migratory connectivity. *Trends in Ecology & Evolution*, 17, 76–83.
- Wiklund, C. & Friberg, M. (2022) Testing the migration syndrome: comparative fecundity of migratory and non-migratory nymphaline butterflies. *Ecological Entomology*, 47, 1061–1067. Available at: <https://doi.org/10.1111/een.13195>
- Wilcove, D.S. & Wikelski, M. (2008) Going, going, gone: is animal migration disappearing. *PLoS Biology*, 6, e188.
- Williams, C.B. (1927) A study of butterfly migration in south India and ceylon, based largely on records by messrs. J. evershed, EE Green, JCF fryer and W. ormiston. *Ecological Entomology*, 75, 1–33.
- Williams, C.B. (1930) *The Migration of Butterflies*. Edinburgh: Oliver and Boyd.
- Williams, C.B. (1938) The migration of butterflies in India. *Journal of the Bombay Natural History Society*, 40, 439–457.
- Williams, C.B. (1939a) Some butterfly migrations in Europe, Asia and Australia. *Physiological Entomology*, 14, 131–137.
- Williams, C.B. (1939b) Some records of butterfly migration in america. *Physiological Entomology*, 14, 139–144.
- Williams, C.B. (1957) Insect migration. *Annual Review of Entomology*, 2, 163–180.
- Williams, C.B., Cockbill, G.F., Gibbs, M.E. & Downes, J.A. (1942) Studies in the migration of lepidoptera. *Transactions of the Royal Entomological Society of London*, 92, 101–174.
- Xiafang, T. (2017) 黑脉金斑蝶 *bHLH* 转录因子家族成员鉴定与分析 [Master's thesis, 江苏大学].
- Yang, L.H. & Gratton, C. (2014) Insects as drivers of ecosystem processes. *Current Opinion in Insect Science*, 2, 26–32.
- Zalucki, M.P., Kitching, R.L., Abel, D. & Pearson, J. (1980) A novel device for tracking butterflies in the field. *Annals of the Entomological Society of America*, 73, 262–265.
- Zalucki, M.P., Parry, H.R. & Zalucki, J.M. (2016) Movement and egg laying in monarchs: to move or not to move, that is the equation. *Austral Ecology*, 41, 154–167.
- Zanden, H.B.V., Chaffee, C.L., González-Rodríguez, A., Flockhart, D.T.T., Norris, D.R. & Wayne, M.L. (2018) Alternate migration strategies of eastern monarch butterflies revealed by stable isotopes. *Animal Migration*, 5, 74–83.
- Zhan, S., Merlin, C., Boore, J.L. & Reppert, S.M. (2011) The monarch butterfly genome yields insights into long-distance migration. *Cell*, 147, 1171–1185.
- Zhan, S., Zhang, W., Niitepöld, K., Hsu, J., Haeger, J.F., Zalucki, M.P. et al. (2014) The genetics of monarch butterfly migration and warning colouration. *Nature*, 514, 317–321.
- Zhu, H., Casselman, A. & Reppert, S.M. (2008) Chasing migration genes: a brain expressed sequence tag resource for summer and migratory monarch butterflies (*Danaus plexippus*). *PLoS One*, 3, e1345.
- Zylstra, E.R., Ries, L., Neupane, N., Saunders, S.P., Ramírez, M.I., Rendón-Salinas, E. et al. (2021) Changes in climate drive recent monarch butterfly dynamics. *Nature Ecology & Evolution*, 5, 1441–1452.

SUPPORTING INFORMATION

Additional supporting information can be found online in the Supporting Information section at the end of this article.

How to cite this article: Chowdhury, S., Zalucki, M.P., Amano, T., Poch, T.J., Lin, M.-M., Ohwaki, A., et al. (2022) Trends and progress in studying butterfly migration. *Integrative Conservation*, 1, 8–24. <https://doi.org/10.1002/inc3.13>